

# **12d**Model

## **Installing Practise Version**

**Version 9**

**June 2009**

**12D SOLUTIONS PTY LTD**

ACN 101 351 991

PO Box 351 Narrabeen NSW Australia 2101

Australia Telephone (02) 9970 7117 Fax (02) 9970 7118

International Telephone 61 2 9970 7117 Fax 61 2 9970 7118

email [support@12d.com](mailto:support@12d.com) web page [www.12d.com](http://www.12d.com)

## **Disclaimer**

12d Model is supplied without any express or implied warranties whatsoever.

No warranty of fitness for a particular purpose is offered.

No liabilities in respect of engineering details and quantities produced by 12d Model are accepted.

Every effort has been taken to ensure that the advice given in this manual and the program 12d MODEL is correct, however, no warranty is expressed or implied by 12D SOLUTIONS PTY LTD.

## **Copyright**

This manual is copyrighted and all rights reserved.

This manual may not, in whole or part, be copied or reproduced without the prior consent in writing from 12D Solutions Pty Ltd.

Copies of 12d Model software must not be released to any party, or used for bureau applications without the written permission of 12D Solutions Pty Ltd.

Copyright (c) 1989-2009 by 12d Solutions Pty Ltd  
Sydney, New South Wales, Australia.

ACN 101 351 991

All rights reserved.

# 1 Installation of 12d Model 9 Practice Version

The *Practise* version is limited to a maximum of 5,000 points and creates projects that cannot be accessed by the *Release* versions of **12d Model** and vice-versa. However the *Practise* version can be used free of charge by 12D Solutions customers and registered *Practise* Users.

These notes are for installing the ***Practise version of 12d Model 9***. There are separate notes for installing the *Release* version.

The *Practise* version must be Registered with 12D Solutions once it is installed on a computer. A new Registration is required for each computer that the *Practise* version is run on.

The *12d Model 9 Installation CD* can be used to install the *Practise* versions of **12d Model 9**.

Or

The file *12dModel 9 Practise.exe* can be down loaded from the web site *www.12d.com*. The file *12dModel 9 Practise.exe* is a self-extracting file for installing the *Practise* version of **12d Model**.

## Extra Notes for All Installations

1. A three-button mouse is essential.
2. The *12d Model Installation CD* contains extra information other than just the installation version of *12d Model*. For example, extra documentation, course notes and source code to macros.

The extra data can be copied from the *12d Model Installation CD* but the copied files may only have a "read only" attribute set. This means that the files can not be edited or modified in any way.

To change the attribute so that a file can be modified, select the file in Explorer, bring up the Properties sheet and under the General tab sheet change the "read only" box so that it is not ticked on.

Selecting **OK** or **Apply** will then modify the attribute of the file.

## Installing the Practise Version of 12d Model 9

These notes are for installing the **Practise** version of 12d Model 9. There are separate notes for installing the **Release** version.

### A. Disk Space required for installing 12d Model 9

Approximately 200 megabytes of disc space will be required for the installation to succeed. After installation this can be reduced to a minimum of 60 megabytes.

### B. Before installing from the DVD or the Web

For Windows 2000, XP, Vista:

Reboot the PC **before** installing 12d Model from the DVD or the Web.

Your login must have Administrator privileges.

### C. Installing 12d Model from the Web

The self-extracting file *12dModel 9 Practise.exe* can be down loaded from the web site [www.12d.com](http://www.12d.com) and used to install the *Practise* version of *12d Model*.

After down loading *12dModel 9Practise.exe*, double-click on *12dModel 9 Practise.exe* and the installation software will be automatically extracted from the file and fires up the **Install 12d Model Practise** screen.

Please go to section "12d Model Practise Screen"

### D. Installing Using the 12d Model 9 Installation DVD

Insert the **12d Model 9 Installation DVD** into the CD drive.

On inserting the CD, the **12d Model** Setup program automatically begins.

If it doesn't, simply double click on the program **Launch.exe** from the DVD.

The **12d Model Release** front screen will appear.



Click on the **12d Practise** tab

The **12d Model Practise** screen will appear.

E. 12d Model Practise Screen

The **12d Model Practise** screen:

**Note** - when installing from the web, the *tabs* with *12d Release*, *12d Practise*, *Other Software* and *Documentation* will not appear. The extra tabs only appear if you are installing from the *12d Model Installation DVD*.



The Steps on the **12d Practise** tab of the *12d Model Installation DVD* will lead you through the installation of the *Practise* version of *12d Model*.

A **video** to guide you through the installation process can be viewed by clicking on **Videos** under the **Installation notes** heading. Or the **Installation Notes** in pdf format can be viewed by clicking on **Notes** under the **Installation notes** heading.

**NOTE** - If the *Camtasia* codec is already installed on your computer then you can proceed to **Install 12d Model 9 Practise**.

Step 1. Install Camtasia Codec

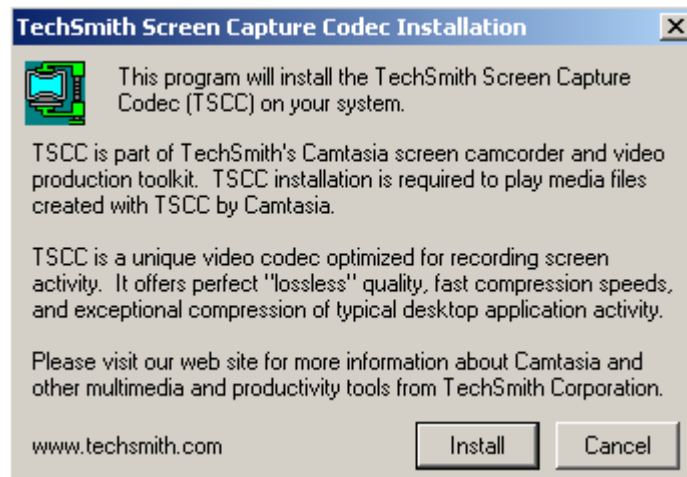
Install the Camtasia Codec that is used for displaying some of the videos on the **12d Model Training CDs** and DVDs.

**Note** - you need Administrator rights to install the Camtasia Codec.

Click on *Camtasia codec*:

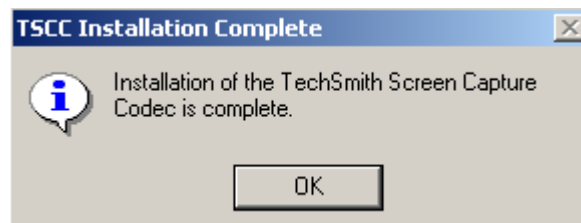
Installation

*Installation message*



Select **Install** to continue with the installation

Installation Complete



Select **OK**.

This completes the installation of the *Camtasia Codec*.

The **12d Model Practise** screen will then appear.

## Step 2. Install 12d Model 9 Practise

Installing the 12d Model Practise software and Training area:

**Note** - you need Administrator rights to install **12d Model 9 Practise**.

Click on *12d Model 9 Practise*:

Welcome

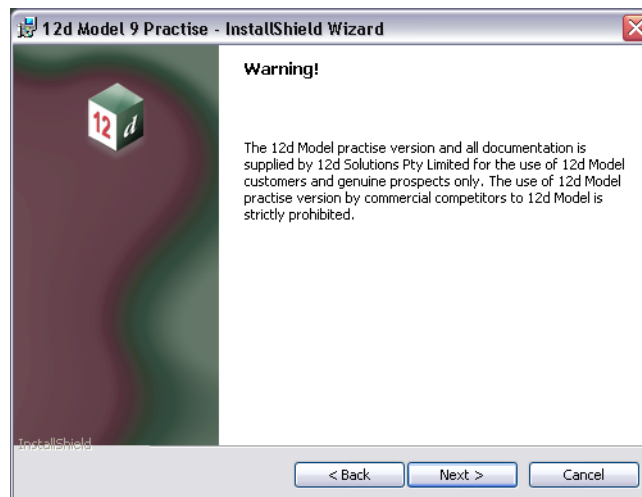
*Welcome message*



Select **Next** to continue with the installation

Warning for commercial competitors

*12D Solutions warning*



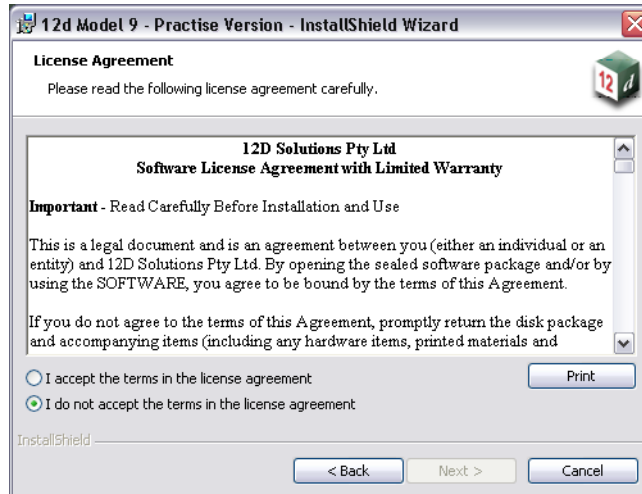
The 12d Model Practise version and all documentation are supplied by 12D Solutions Pty Limited for the use of 12d Model Customers and genuine prospects only. The use of the 12d Model practise versions by commercial competitors to 12d Model is strictly prohibited.

Select **Next** to continue if you are a 12d Model Customers or a genuine prospect



## Software License Agreement

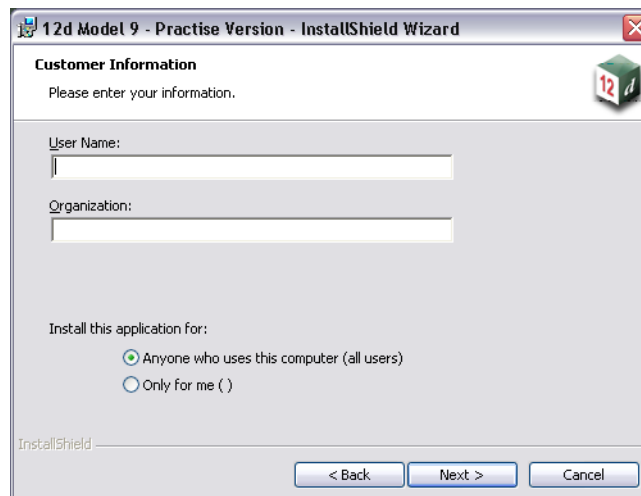
## 12D Solutions license agreement



If you agree with the License conditions, click on *I accept the terms in the license agreement*

Select **Next** to continue with the installation

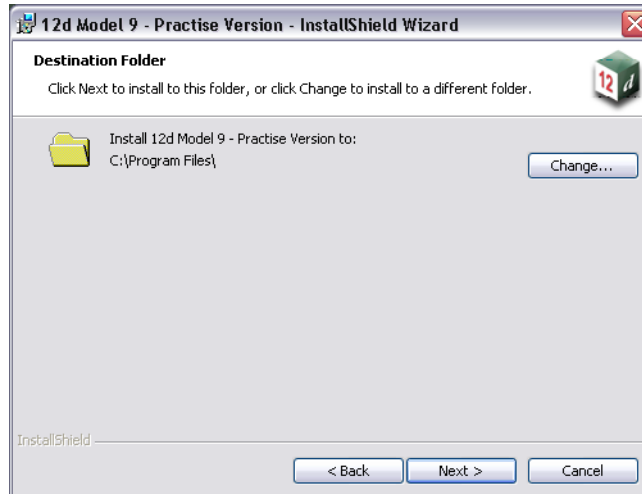
## Customer Information



fill in *User Name* and *Organisation*, tick who can use the computer

select **Next** to continue with the installation

### Destination Folder



continue with the default installation area for the software *c:\Program Files\* or click on *Change* to browse to another area for installation

select **Next** to continue with the installation

### Setup Type

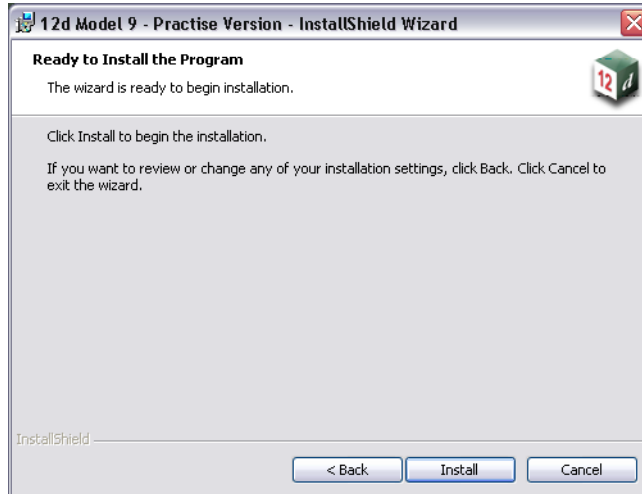


select **Complete**

select **Next** to continue with the installation

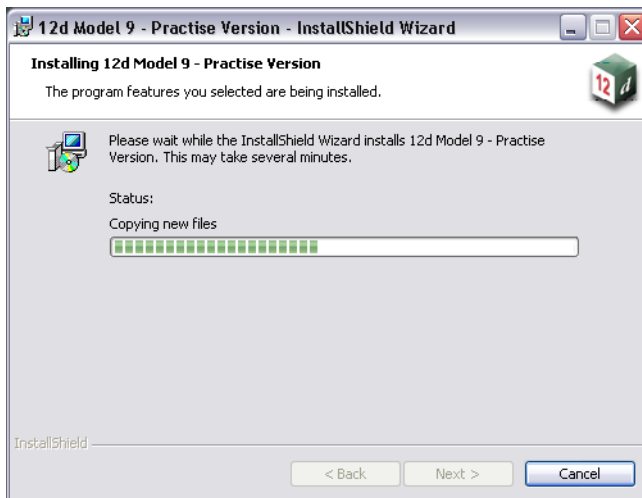
Ready to Install

Begin the installation



select **Install** to continue the installation

The software will be copied onto the computer and installed.



Setup Complete

End of installation



Select **Finish** to complete the installation

The **12d Model Practise** screen will then appear.



Select **Exit** at the bottom right hand corner of the screen to end the installation.

For **Practise** versions, the software needs to be authorised by emailing information about your computer to 12d Solutions.

The form for the required information is automatically created when an unauthorised *12d Model Practise version* is **started up**. The form can be emailed to *12D Solutions* from the *12d Model Practise* software.

## Folders and Icons Created by Installing 12d Model Practise

### Folders Created by the Installation

The *12d Model Practise* installation loads the **12d Model Practise software** into the folder

C:\Program Files\12d Practise\12dmodel\9.00

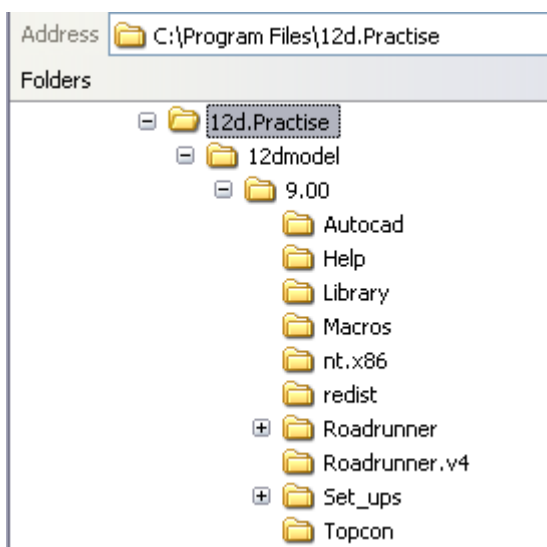
12d Model users normally only have **read** access to this area.

The *12d Model* installation also creates an area

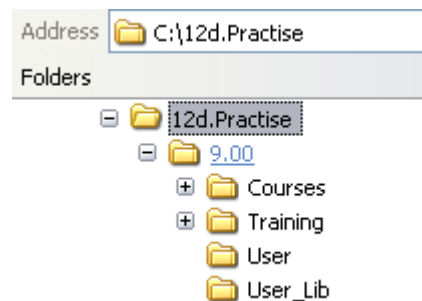
C:\12d Practise \9.00

which during the installation is given read/write access for the user.

The folder 12d Practise\9.00 contains the training data used with the *Getting Started for Design and Getting Started for Surveying* manuals and the subfolders **User** and **User\_Lib** are created for future user customisations of *12d Model*



**12d Model Practise software area**



**12d Model Practise user areas**

### Icons Created by the Installation

The installation loads the appropriate components and creates the **12d Model 9 Practise** icon



The *12d Model 9 Practise* icon fires up **12d Model Practise** and attaches to the folder *12d Practise\9.00*.

## Authorizing the Practise Version of 12d Model 9

[authorization\\_request\\_form](#)

[accept\\_code](#)

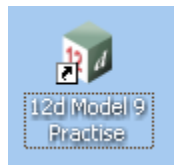
### Warning

The *12d Model Practise* version and all documentation is supplied by *12d Solutions Pty Ltd* for the use of 12d Model Customers and genuine prospects only. The use of the *12d Model Practise* version by commercial competitors to **12d Model** is strictly prohibited.

The Practise version is limited to a maximum of 5,000 points and creates projects that cannot be accessed by the Release versions of 12d Model and vice-versa. However the Practise version can be used free of charge by *12d Solutions* customers and registered Practise Users.

The Practise version needs to be Registered with *12d Solutions* once it is installed on a computer and a new Registration is required for each computer the Practise version is run on.

The installation creates the **12d Model 9 Practise** icon:



Next fire up **12d Model Practise** by double clicking on the *12d Model 9 Practise* icon.

*This will bring up the Project Selection panel with an **Authorize** button it.*

Click on **Authorize** to display the **Authorize Request Form** panel.

**WARNING!**

The 12d Model practise version and all documentation is supplied by 12d Solutions Pty Ltd for the use of 12d Model customers and genuine prospects only. The use of 12d Model practise version by commercial competitors to 12d Model is strictly prohibited. The Requester hereby acknowledges that they are not using 12d Model for competitive purposes or passing any information on to a third party that is using the information for competitive purposes. The Requester hereby acknowledges 12d Solutions copyright in the 12d Model software and documentation whether or not it has been filed with the copyright office.

Press F1 for help.]

First Name  Family Name

Company Name

Address

Town/City  Post/Zip Code

State  Country

Phone  Fax

Email Address

Email System

practise.4d: error 0:

Email Save Finish Help

Authorize Quit Help

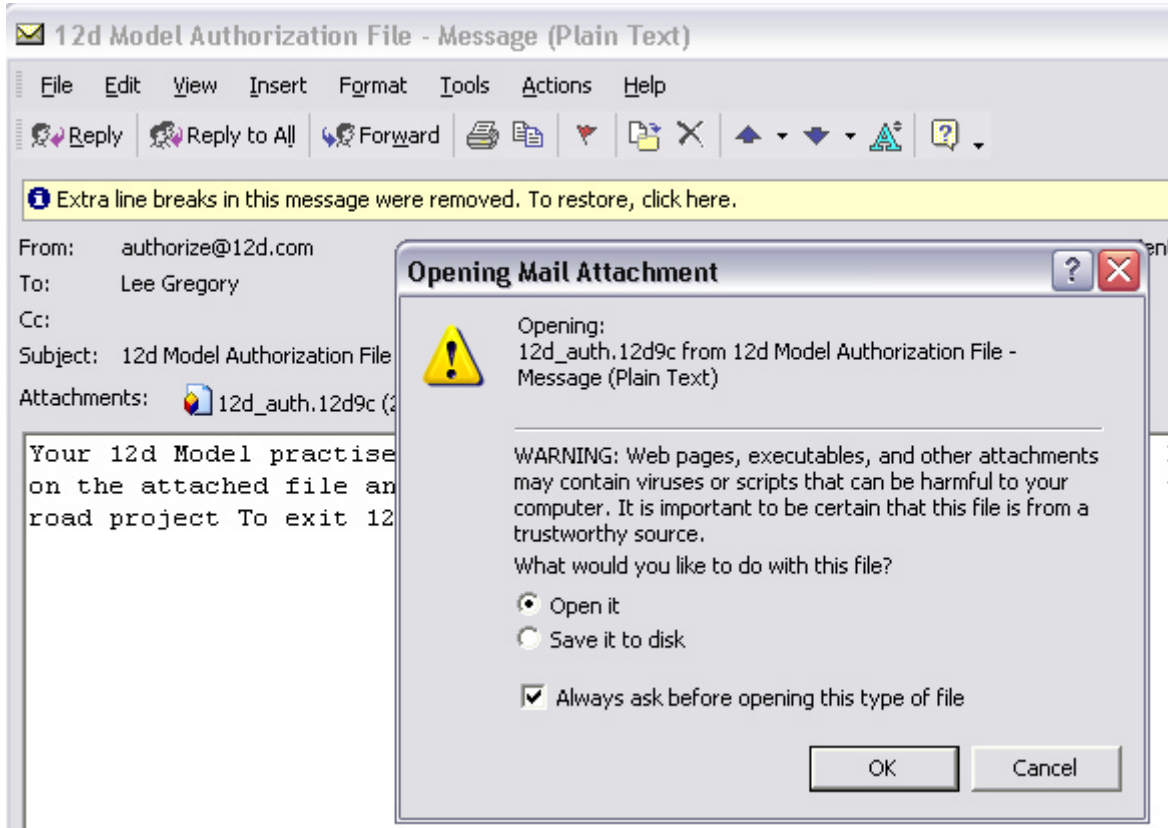
Fill in the details (all those in black type must be filled in) and then either

- click on the **Email** button to send the information to 12D Solutions Pty Ltd or if this fails
- click on the **Save** button. A file called *12d\_auth.12d9r* is then written out to the folder **My Documents**. Please email this file (as an attachment) to [authorize@12d.com](mailto:authorize@12d.com)

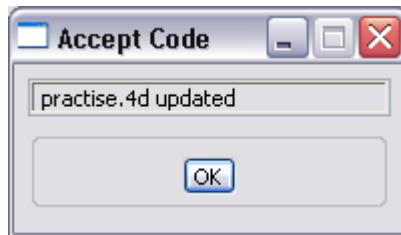
Then click on the **Finish** to exit *12d Model*.

On receiving your request, 12D Solutions will generate an authorization code and send an email back to you with an attachment called **12d\_auth.12d9c**

When you receive the email with the file *12d\_auth.12d9c* attached to it, double click on the attached file *12d\_auth.12d9c*, click on **Open it** and finally click on **OK**.

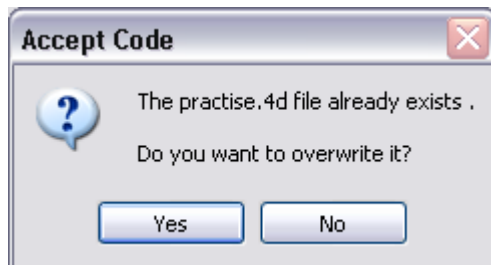


12d Model Practise will then start up and validate the *12d\_auth.12d9c* file, and if it is valid save the authorization code away as the file *practise.4d* in the folder *c:\12d Practise\9.00* and then bring up the *Accept Code* panel with the *practise.4d updated* message.



Click on **OK** and 12d Model Practise will open and display the project Road.

*Note: if you already have a pratise.4d file in the folder then the **Accept Code** panel will be brought up, stating that the *practise.4d* file already exists, and asking to overwrite it.*

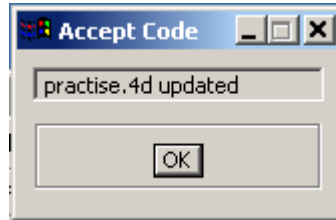




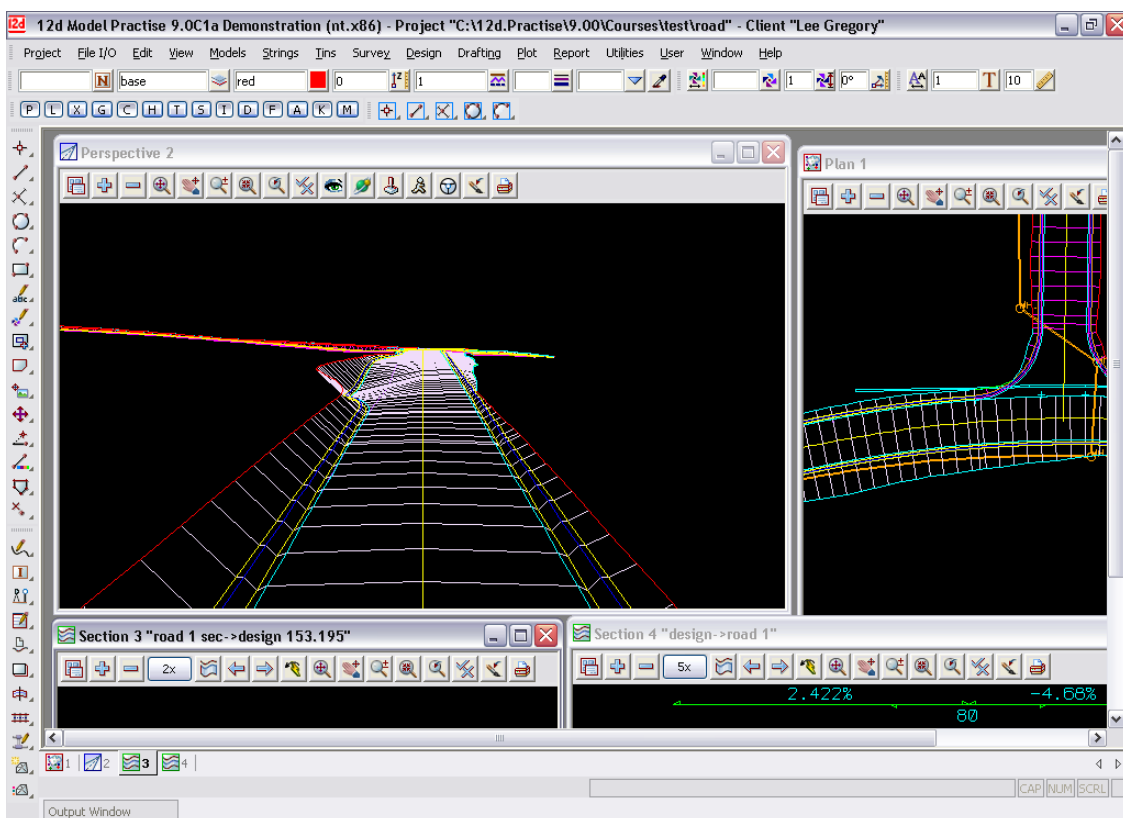
Click on **Yes** and the new authorization code will be saved away as the file **practise.4d** in the folder

*c:\12d Practise\9.00*

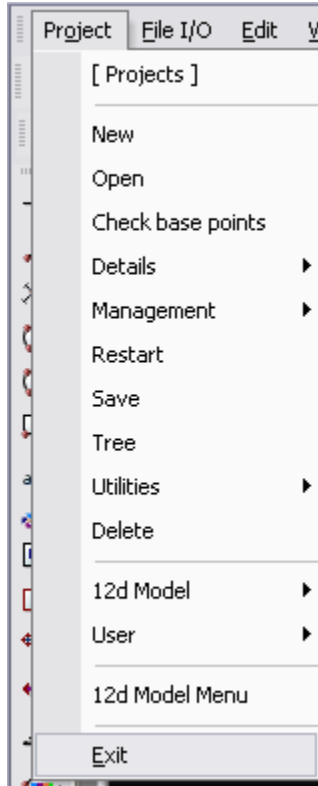
The **Accept Code** panel then comes up with the *practise.4d updated* message.



Click on **OK** and *12d Model Practise* will open and display the project *Road*.



To exit *12d Model Practise*, click on **Project =>Exit**



If *12d Model Practise* does not start up correctly, please go to the next section “Possible Problems When Authorizing the Practise Version”

### Possible Problems When Authorizing the Practise Version

1. The date on your computer is not the correct date.
2. The computer you are authorizing is not the same one that the *Authorisation Request Form* was generated for.  

The **12d\_auth.12d9c** and the generated **practise.4d** file are only valid for the computer that the *Authorisation Request Form* was generated on. If you want the Practise version to run on another computer, you need to generate a new *Authorisation Request Form* on that computer and send it to 12d Solutions.
3. If you change your network card after generating the *Authorisation Request Form* then the authorization will stop working. A new *Authorisation Request Form* needs to be sent to 12d Solutions.
4. If the file **12d\_auth.12d9c** does not appear as an attachment then your email system can't handle MIME attachment. Please contact 12D Solutions at [authorize@12d.com](mailto:authorize@12d.com)